

Corpus Christi Bay Race Course Marks

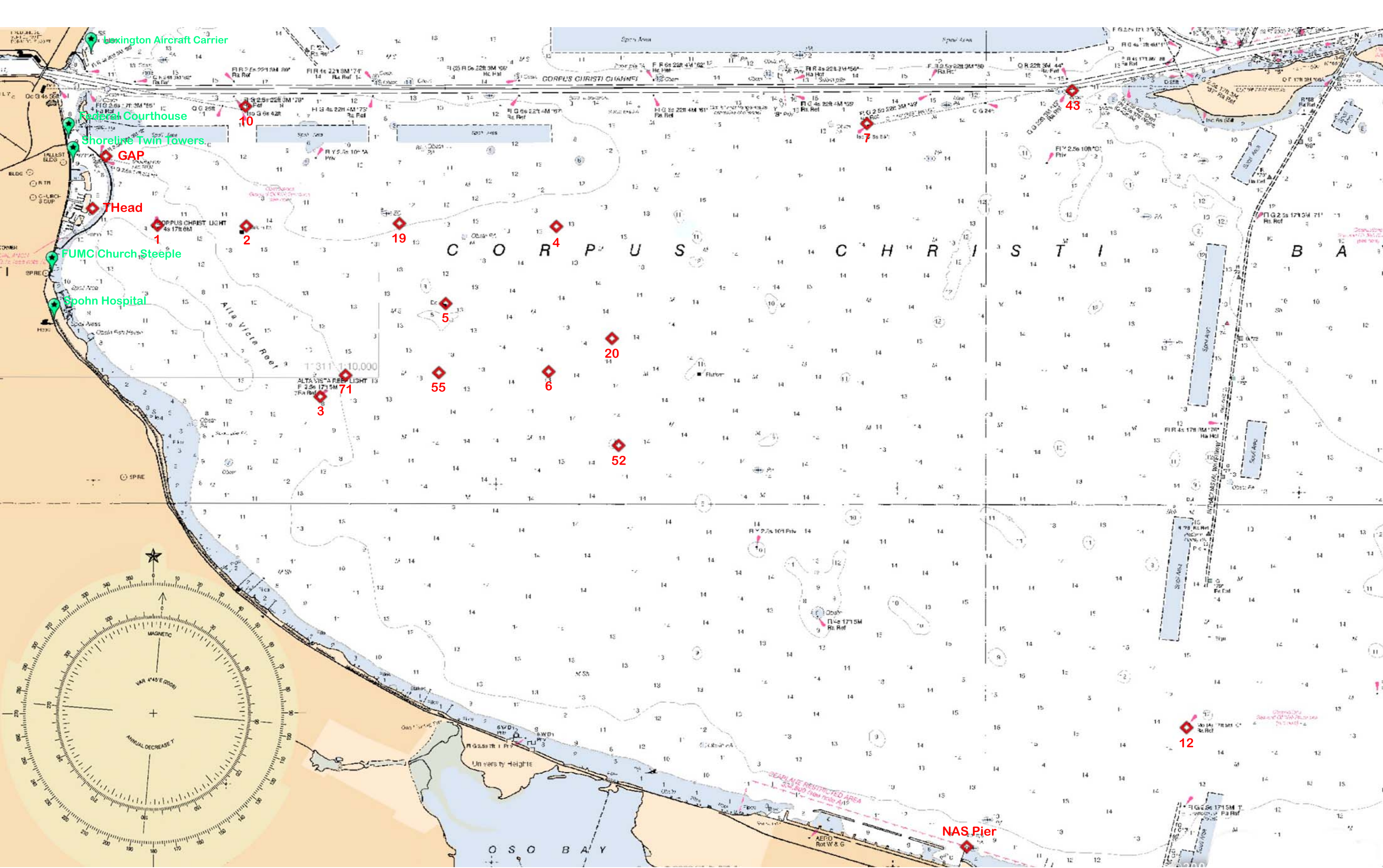
GAP		THead		1		2		3		4		5		6		7		55		52		10		71		NAS Pier		12		19		20		43																																																																																																																																																																																																																																																																																					
193°	0.460	13°		144°	0.729	324°		117°	90°	1.302	0.731	297°		139°	137°	157°	2.711	1.985	1.581	319°	317°	337°	3.741	3.265	2.535	2.410	279°	270°	270°	232°	114°	105°	111°	52°	233°	3.067	2.462	1.768	1.303	1.108	294°	285°	291°	232°	53°	116°	111°	116°	83°	182°	124°	4.082	3.451	2.780	1.889	1.235	1.027	296°	291°	296°	263°	2°	304°	87°	81°	80°	62°	70°	65°	50°	6.262	5.894	5.174	5.064	2.715	3.789	3.369	267°	261°	260°	242°	250°	230°	123°	118°	128°	78°	217°	185°	269°	238°	3.308	2.635	2.020	0.997	1.566	0.594	0.902	4.113	303°	298°	308°	258°	37°	5°	89°	58°	4.889	4.232	3.589	2.487	1.938	1.869	0.854	3.429	1.602	300°	296°	301°	279°	344°	310°	317°	36°	292°	69°	35°	359°	345°	292°	315°	312°	271°	325°	313°	1.226	1.250	1.025	2.560	2.745	2.358	3.372	5.108	2.780	249°	215°	179°	165°	112°	135°	132°	91°	145°	133°	2.722	2.010	1.516	0.277	2.135	1.027	1.669	4.796	0.767	313°	309°	327°	228°	53°	53°	88°	63°	88°	104°	335°	9.221	8.517	7.955	6.563	6.290	6.321	5.324	6.246	5.940	309°	308°	311°	305°	327°	317°	319°	352°	312°	320°	314°	308°	10.141	9.488	8.839	7.663	6.729	7.088	6.064	5.801	6.854	298°	296°	298°	291°	309°	300°	300°	332°	296°	297°	302°	293°	240°	2.482	1.989	1.258	1.619	1.277	0.785	1.765	3.935	1.319	283°	269°	268°	203°	91°	150°	135°	77°	165°	136°	293°	198°	138°	123°	4.445	3.859	3.155	2.449	1.060	1.399	0.593	2.788	1.452	0.917	3.609	2.212	5.237	5.779	2.005	290°	284°	287°	258°	333°	282°	241°	48°	258°	176°	296°	261°	146°	125°	299°	85°	81°	80°	66°	74°	70°	60°	80°	64°	50°	88°	67°	7°	350°	78°	60°	7.962	7.604	6.884	6.711	4.410	5.461	4.929	1.710	5.737	265°	261°	260°	246°	254°	250°	240°	260°	244°	230°	268°	247°	187°	170°	258°	240°

DISTANCES (NAUTICAL MILES) AND TRUE BEARINGS BETWEEN MARKS

This information is compiled from GPS data collected by Karl Stein and Owen Hopkins November 2006. The new SABCO well points from Bob Rice were recalculated by Owen Hopkins 8-18-09 in collaboration with Allen Borden and Mark Foster.

RACE MARK	DESCRIPTION and IDENTIFICATION	LATITUDE & LONGITUDE	DECIMAL DEGREES	DECIMAL MINUTES
Thead	RACE COMMITTEE STARTING LINE MARK ON T-HEAD STARTING LINE EXTENDS TO PAINTED BREAKWATER ROCK	27° 47' 33.4" N 97° 23' 18.0" W	27.7926 97.3883	27° 47.5560 97° 23.2980
GAP	APPROX. MID POINT OF RED & GREEN DAY MARKS FI G 2.5S 17ft 3M "1", AND FI R 2.5s 17ft 3M "2"	27° 48' 00.4" N 97° 23' 10.7" W	27.8000 97.3863	27° 48.0066 97° 23.1783
1	RED DAY MARK FI R 4s 17ft 4M	27° 47' 24.7" N 97° 22' 41.7" W	27.7902 97.3783	27° 47.4120 97° 22.6980
2	MIDWAY BETWEEN 2 LIGHTED WELL HEADS (FI 1s) 61-1 & 71-1	27° 47' 24.4" N 97° 21' 52.1" W	27.7901 97.3644	27° 47.4060 97° 21.8680
3	RED/WHITE DIAMOND DAY MARK FI R 2.5s 17ft 3M "2"	27° 45' 56.3" N 97° 21' 10.7" W	27.7656 97.3530	27° 45.9360 97° 21.1800
4	LIGHTED WELL HEAD (FI 1s) SABCO #1 St Tr 54	27° 47' 23.9" N 97° 19' .025" W	27.7900 97.3167	27° 47.4000 97° 19.0020
5	SEPARATOR PLATFORM FOR PETROHUNT 72-1	27° 46' 44.5" N 97° 20' 0.8" W	27.7790 97.3336	27° 46.7400 97° 20.0160
6	LIGHTED WELL HEAD (FI 1s) SABCO 53 #7	27° 46' 09.4" N 97° 19' 03.3" W	27.7693 97.3176	27° 46.1580 97° 19.0560
7	CUT "A" WEST HIGH RANGE(INBOUND) Iso G 6s 65ft (LIGHT NOT VISIBLE ALL AROUND)	27° 48' 17.9" N 97° 16' 06.0" W	27.8050 97.2683	27° 48.3000 97° 16.0980
55	LIGHTED WELL HEAD (FI 1s) SABCO ST 55 #8	27° 46' 08.8" N 97° 20' 04.5" W	27.7691 97.3345	27° 46.1460 97° 20.0754
52	LIGHTED WELL HEAD (FI 1s) SABCO ST 52 #7	27° 45' 31.0" N 97° 18' 24.0" W	27.7587 97.3067	27° 45.5220 97° 18.4038
10	HIGH RANGE, BRIDGE (OUTBOUND) Iso G 6s 42ft (LIGHT NOT VISIBLE ALL AROUND)	27° 48' 26.3" N 97° 21' 52.7" W	27.8073 97.3646	27° 48.4380 97° 21.8760
71	LIGHTED WELL HEAD (FI 1s) SABCO ST 71 #1	27° 47' 7.32" N 97° 20' 56.6" W	27.7687 97.3490	27° 46.1220 97° 20.9430
NAS Pier	END OF FISHING PIER 9 feet depth	27° 42' 04.1" N 97° 15' 09.8" W	27.7011 97.2527	27° 42.0660 97° 15.1620
12	WHITE OCTAGON DAY MARK(LIGHTED) "C" Mo(A) Ra Ref	27° 43' 05.8" N 97° 13' 07.3" W	27.7183 97.2187	27° 43.0980 97° 13.1220
19	LIGHTED RED WELL HEAD (FI 1s) NO NAME	27° 47' 25.9" N 97° 20' 26.7" W	27.7905 97.3408	27° 47.4300 97° 20.4480
20	LIGHTED WELL HEAD (FI 1s) SABCO ST 53 #6	27° 46' 26.6" N 97° 18' 28.0" W	27.7741 97.3078	27° 46.4460 97° 18.4680
43	CC SHIP CHANNEL GREEN DAY MARK Q G 17ft 3M "43" (SAFE CHANNEL ENTRY POINT) Ra Ref	27° 48' 35.1" N 97° 14' 11.5" W	27.8097 97.2365	27° 48.5850 97° 14.1916

LEXINGTON AIRCRAFT CARRIER	27° 48' 53.6" N 97° 23' 19.2" W	FEDERAL COURTHOUSE	27° 48' 09.6" N 97° 23' 31.6" W	SPOHN SHORELINE HOSPITAL	27° 46' 36.0" N 97° 23' 39.3" W
SHORLINE PLAZA TWIN TOWERS	27° 47' 57.4" N 97° 23' 29.1" W	FUMC STEEPLE	27° 47' 00.4" N 97° 23' 40.7" W		



Boxington Aircraft Carrier

Federal Courthouse

Shoreline Twin Towers

GAP

THead

FUMC Church Steeple

Spohn Hospital

NAS Pier

